

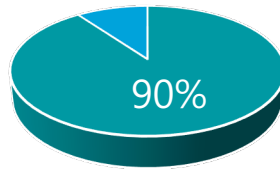
# Discover Insights and Enhance Experience

AI Solutions Overview



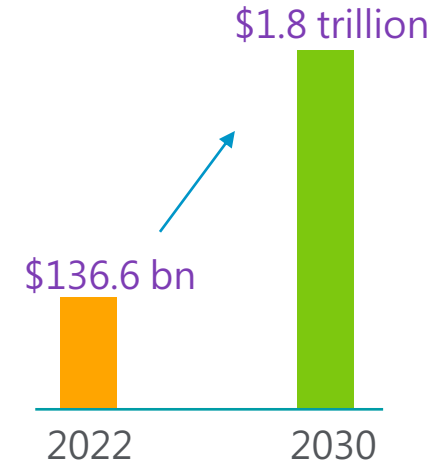
# AI Market Dynamics: Growth, Adoption, and Competitive Edge

**\$** 299.64 bn  
US AI market in 2026



90% companies view  
AI gives competitive edge

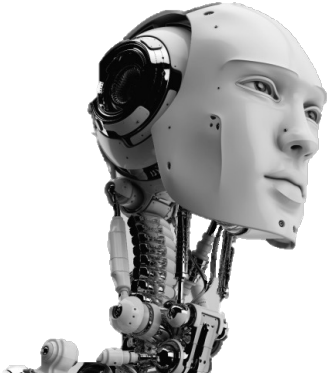
**↑** 40%  
Employee productivity



Global AI market

Source: GrandViewResearch, PWC, MIT Sloan Management

# AI Solutions: NLP, Computer Vision, and Predictive Analytics



## NLP-enabled Communication

- Language modeling (voice/chat bot)
- Named entity recognition
- Text summarization
- Sentiment analysis



## Computer Vision

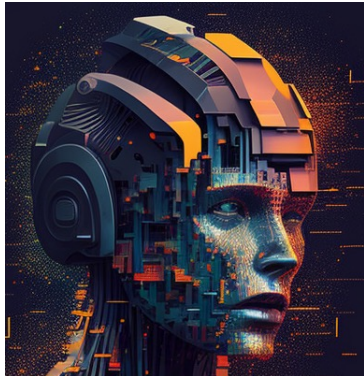
- Object detection
- Image segmentation
- Generative models
- Image classification



## Predictive Analytics

- Time series analysis
- Anomaly detection
- Recommendation systems
- Risk assessment

# AI Allied Solutions: Big Data, Pipeline Deployment, and Digital Transformation



## Big Data Analytics

- Language modeling (voice/chat bot)
- Named entity recognition
- Text summarization
- Sentiment analysis



## AI Pipelines & Deployment

- Object detection
- Image segmentation
- Generative models
- Image classification



## Digital Transformation

- Time series analysis
- Anomaly detection
- Recommendation systems
- Risk assessment

# Advancing businesses with superior insights using modern deep learning techniques



# Use case. Conversational AI solution for a product company

Context: A HR solutions company aims to develop a user-friendly AI-powered voice bot for their clients' employees, enabling easy access to relevant company information.

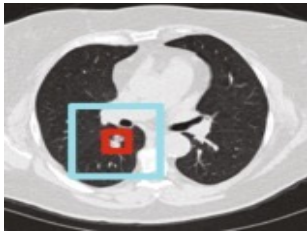
Solution: Voice bot successfully deployed.

## Features

- AI-powered voice/ chatbot
- Built with transformer-based architecture
- End-to-end pipeline for deployment and user access
- Authentication module for SSO included
- Mobile app deployed for iOS and Android
- Multilingual with default English, Spanish, and Arabic
- Deployed on AWS with high security standards



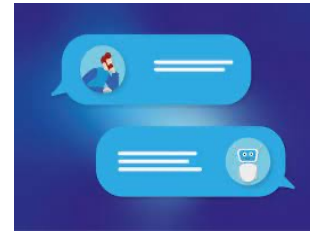
# Healthcare. revolutionize with early disease detection, and improved patient outcomes



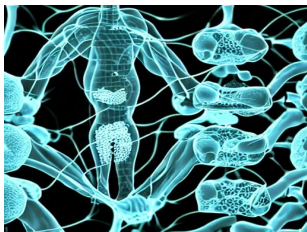
Accurate disease diagnosis analysing medical images (CT scans, MRIs, X-rays)



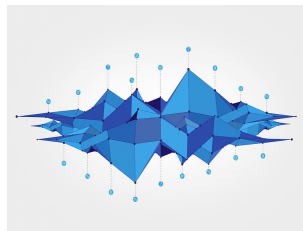
Predict disease outcomes and identify patterns from patient data (electronic health records, medical images) analysis



CareConnect360: chatbot for appointments, refill, and telehealth for triage, consultations, & follow-ups



Personalize treatment plans using patient data (genomics, medical history)



Analyze large datasets for medical research by identifying correlations, patterns, and predicting disease outcomes



Predict disease progression and identify high-risk patients for early intervention and better disease management

# Insurance. enable personalized engagement, enhance efficiency, and reduces costs



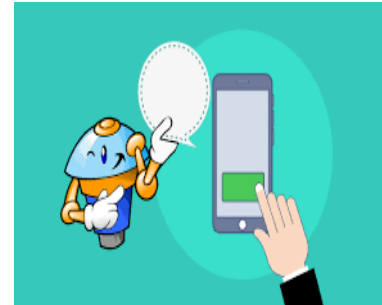
Predictive modelling for risk assessment, pricing optimization, and personalized offerings



Fraud detection and prevention through analysis of large data volumes



Automated claims processing



Personalized customer support chatbots



# Technology. cybersecurity, and advanced data analytics



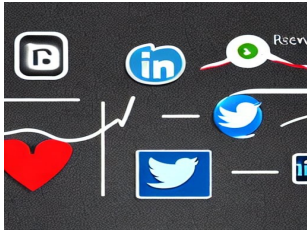
Fix IoT/edge device vulnerabilities to prevent cyber attacks



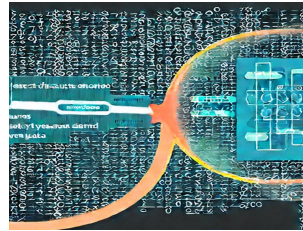
Assess BYOD security for employee personal devices



Security & surveillance using deep learning: facial recognition, motion detection, behaviour analysis



Sentiment analysis of reviews & social media for potential security risks



Summarize documents for important security-related info



Entity recognition for fraud detection & threat analysis



# Solution Cycle

- Understand business ecosystem
- Identify business scope & drivers



- Understand focus areas
- Hypothesize opportunities



- Data cleansing
- Data aggregation



Feature engineering

- Model selection
- Parameters definition



- Hyperparameters tuning
- Evaluate & Optimize



- Build APIs/ Docker
- Software integration



- Training and support
- Measures to improve

# Engagement steps



What it is and what is needed.  
Understand aspirations. Analyse  
existing capabilities

Proof of Concept. Design and test  
a small-scale system, assuring  
model viability

Move to production duly  
considering resource  
intensiveness, transition hiccups,  
change management

DISCOVER

DEFINE

DESIGN

DEVELOP

DEPLOY

Define the problem statement.  
Visualise how outcome would  
look like. Articulate value to end  
user

Create full blown solution taking  
cues from test feedback and  
maintain expected standards

# Free POC. Optimize business processes with AI powered solutions

No commercial strings attached!!

*We review and identify opportunity areas for AI application, if needed.*

NLP-enabled  
Communication

**NLP** enables efficient analysis and processing of text data, extracting insights and improving interactions with customers and employees.  
The AI-powered chatbot developed for our customer provides 24x7 support via mobile and web interfaces, assisting their client employees globally.

Computer  
Vision

**Computer Vision** techniques offer accurate and efficient analysis of visual data for task automation, pattern detection, and anomaly identification.  
We developed a model which provides improved accuracy for malignancy detection in medical images.

Predictive  
Analytics

**Predictive Analytics** analyses historical data to identify trends and patterns, leading to informed decision-making and optimized operations.  
We developed a solution to accurately identify risk levels to recommend premiums.

*Not sure about partnering yet?*

Experience our complimentary conversational AI solution!

# Complementary Conversational AI solution

Download Maquina app from iOS or Android devices to start using the solution. Sign-in using company email id, or Google or Microsoft.

All you need to do: Send the documents you want the machine to respond queries to. Share the list of emails to have access. Write now @ [pradeepk@coretek.io](mailto:pradeepk@coretek.io)

## Features

- Price: \$0 for 2 years, up to 500 users, unlimited chats
- UI: Mobile app for iOS and Android in English language
- Training: Upload up to 30 documents or 500 pages, yearly document update
- Weekly email usage update
- Security: 256-bit SSL encryption, sign-in with company email, Google or Microsoft
- Support: Help center, email support
- Deployed on AWS with high security standards



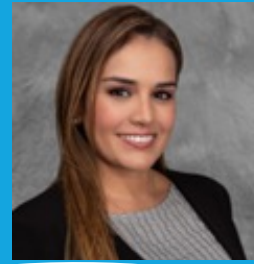
# Some of Our esteemed clients

“It’s extremely important to US companies to be confident as to legal structures and operational comfort for doing business in a foreign country. Since CoreTek possesses the best practices, we are happy partners and intend to grow in coming months”



Mary Spio  
CEO - **CEEK VR**  
Sacramento, USA

“CoreTek Team has always been a great support to us when needed”



Christina B  
Manager- **Steven Douglas**  
Miami, USA





# About Us

- Coretek provides cutting-edge deep learning solutions for natural language processing, computer vision, and predictive analytics
- Our team comprises expert data scientists, machine learning engineers, and software developers
- We develop bespoke solutions to meet clients' specific needs
- We work closely with clients using design thinking and agile methodology to ensure user needs are well understood and met
- Our aim is to be a trusted partner, providing insights and tools for informed decision-making, and talent access
- Founded by Pradeep Kanneganti, a serial entrepreneur with extensive global experience in Microsoft and other firms
- BC Mouli leads practice, with 20+ years of consulting and functional experience in firms like KPMG, Deloitte, and Cyient

## USA

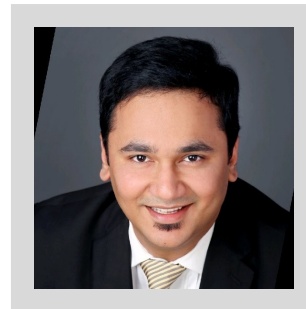
2055 Limestone RD STE 200C,  
Wilmington, DE. USA. 19808  
mobile: +1.617.283.3684;  
+1.650.660.0093.

## CANADA

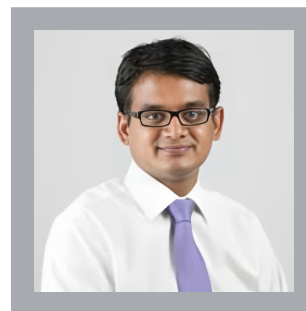
2967 Dundas St. W., 360d,  
Toronto, ontario, Canada,  
M6P 1Z2

## INDIA

Q4 10th Floor, Cyber Towers  
HITEC City, Hyderabad, IN. 500081  
+91.703.211.1112



Pradeep K  
CEO & Founder



Mouli BC  
Technology Head



# Thank you

Pradeep Kanneganti